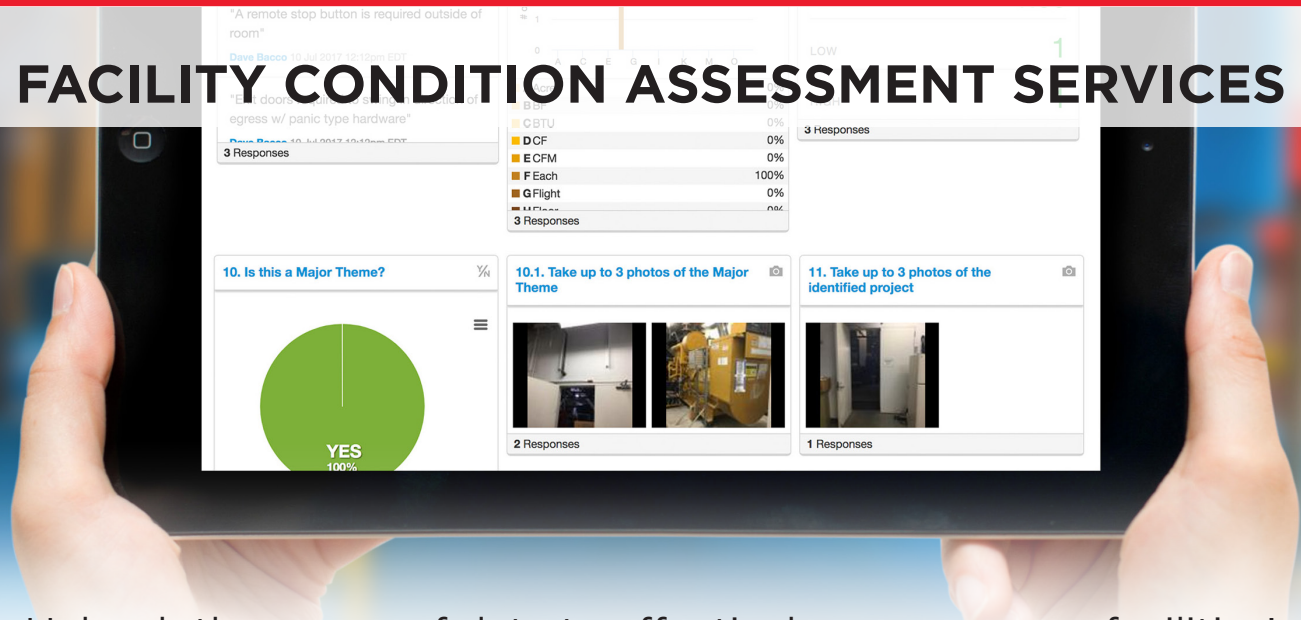


FACILITY CONDITION ASSESSMENT SERVICES



Unleash the power of data to effectively manage your facilities' operational resources and prioritize deferred maintenance needs

STRATEGIC PLANNING FOR YOUR FACILITY NEEDS

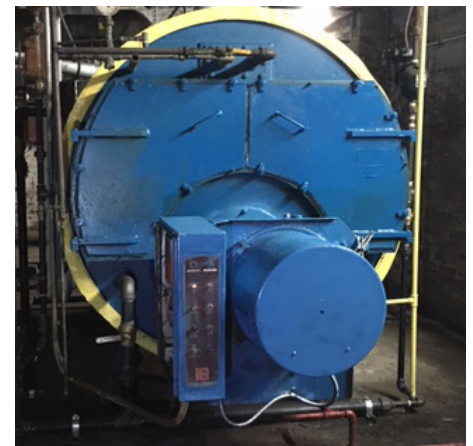
Facilities owners and managers are facing major challenges affecting the current state of their facilities, primarily limited capital funds and the facility's age and use. According to a recent "Sightlines State of Facilities Report" and the "Estimated Useful Lives of Depreciable Hospital Assets", many of the building assets on today's education and healthcare campuses are near or past their useful lives. As a result, deferred maintenance has grown, causing a significant increase in critical building and mechanical system emergencies.

Owners are addressing these challenges by keeping their facilities maintenance priorities in check, allowing for more strategic use of their limited capital, operations staff, and resources. A key approach in this priority management is through a detailed Facilities Condition Assessment (FCA). High-quality building condition data is used to identify and restore facility systems and spaces that are mission critical before extensive deterioration occurs, such as expensive repairs or system replacements.

Aramark has more than 30 years of experience providing facility assessment services to its clients. The Aramark Engineering and Asset Solutions (EAS) team leverages its strategic facility planning experience, along with its operator's perspective, to understand a facility owner's deferred maintenance and modernization needs, and develops tailored solutions to drive their business forward.



Deferred maintenance - facility boiler



Boiler replacement

FACILITY CONDITION ASSESSMENT SERVICES

OUTCOME-FOCUSED SOLUTIONS

A recent client engaged Aramark to perform a Facility Condition Assessment on its campus totaling 400,000 GSF. The assessment generated detailed metrics and analytics illustrating deferred and planned maintenance needs. The client leveraged this valuable information and subsequently invested \$11M in capital and facilities operating funds. This investment led to the completion of more than 250 projects and significant improvements on campus.

Renewal projects included:

- New roofs for the client's library, theater and sciences building
- Plumbing and HVAC updates and replacements
- Electrical lighting upgrades and transformer replacements
- Fire/life safety improvements
- Roof, gutter and stucco repairs across campus

In some cases, facility owners do not have the capital and operations funds to address their deferred maintenance. In 2013, the College of

Mount Ida engaged Aramark to conduct a Facilities Condition Assessment. The assessment generated a detailed inventory that revealed deferred maintenance needs at over \$15M, and capital renewal and modernization needs of over \$8M.

A creative financial solution was devised to economically support revitalization. The Aramark EAS team was contracted to design and implement an energy management program that resulted in a 20% reduction of energy costs. Aramark prepared third-party financing for the improvement opportunities which were fully funded and supported by rebate incentives available through local electric and natural gas utilities.

UNIQUE SOFTWARE TECHNOLOGY

Facilities managers and owners have the ability to streamline large volumes of critical building data using Aramark's Assessment Software. The software improvements allow for real-time facility data that can be used for financial and strategic decision making.

The assessment technology provides a seamless, easy to use software platform with the following features:

- Easy to use
- Mobile & GPS technology
- Data Security
- Data is available 24/7/365
- High res digital photos
- Unlimited number of concurrent users
- Real - time technology
- Export data to Excel
- Comprehensive Training
- Technical Support

To learn more about Aramark's Facilities Condition Assessment Services please contact our Engineering and Asset Solutions team at eas-info@aramark.com

